



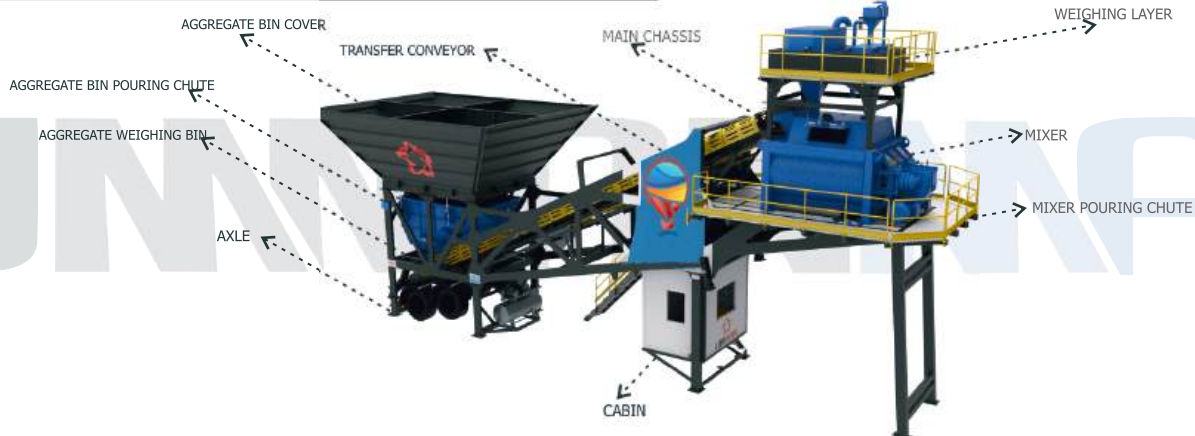
# UNMANNAK

	SPECIFICATIONS	UNIT	
<b>Mixer Specifications</b>	<b>Plant Capacity</b>	m <sup>3</sup> /h	120
	Mixer Specifications	m <sup>3</sup>	3
	Dry Filling Volume	Liter	4000
	Compacted Concrete	Liter	3000
	Motor Power	kW	2x55
<b>Weighing Bin Capacity</b>	Cement Weighing Capacity	kg	18000
	Water Weighing Capacity	kg	1000
	Additive Weighing Capacity	kg	20
	Aggregate Compartments	Pieces	4
<b>Aggregate Bin</b>	Bin Capacity	m <sup>3</sup>	10-15
	Aggregate Weighing Capacity	kg	6000
<b>Transfer Belts</b>	Width	mm	1000
	Length	mm	15000
	Motor Power	kW	22
<b>Cement Screw Conveyor</b>	Diameter	Ø	273
	Length	mm	11500
	Motor Power	kW	15
<b>Air Compressor</b>	Pressure	bar	6-8
	Air Tank	Liter	600
	Store House	L/dk	1657
	Motor Power	kW	7,5
<b>Weight</b>		tons	37
<b>Total Power</b>		kW	215
<b>Transport Type</b>	1 Tow Truck		



## GÖREME

MOBILE 120 SINGLE CHASSIS  
CONCRETE BATCHING PLANT



### OUR MIXER QUALITY



\*The front surface reducer part of the mixer can be opened easily. In this case, maintenance operations can be carried out more easily.



\*Planetary reducer is used. \*2\*37 kW motor is used.

\*Mixer SKF brand automatic and manual lubrication is available.

\*There is an emergency stop button that may occur regarding the mixer.

\*3 pieces telemechanical switches are available.

\*Hydraulic unit is available.

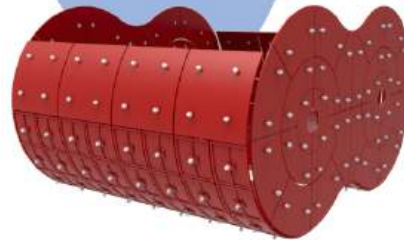
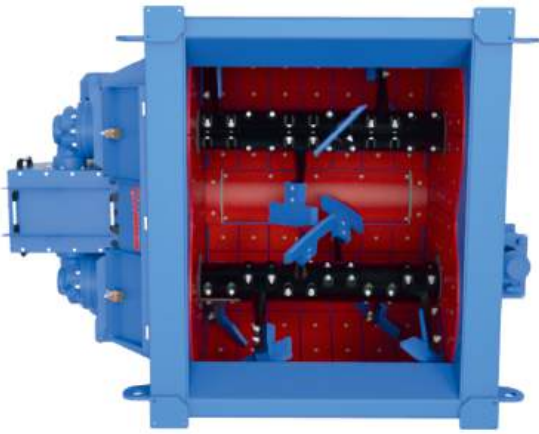
**CONTACT US!**

UNMANNAK A.Ş.  
Adres: İvrek O.S.B. 1341.Cad.  
No:71 Yozgat/46100

Phone: +90 312 394 19 90  
Fax: +90 312 394 19 94

E-mail: info@unman.com.tr  
Web: www.unman.com.tr





\*\*Mixer wear-resistant parts are made of Ni-hard material.

\*Mixer, mixer and scraper arm group is made of Ni-hard material.



\*Mixer bearing part is available.



\*Mixer lower pouring chute is available.



\*Mixer upper cover part is available.

### OUR TRANSFER CONVEYOR QUALITY



\*Transfer Conveyor with top and bottom covers available.



\*Loadcell is available.



\*Drum coating is available.



\*KR type reducer is used.



\*Guide roller part is available.



\*SNL bearing type is used.



\*Rope switch is used.

### OUR WEIGHING LAYER QUALITY



\*Cement weighing bin is available.



\*Water weighing bin is available.



\*Additive weighing bin is available.



\*Vibromotor is available.



\*The valves with flap and actuators are available



\*The valves with flap and actuators are available



\*1" ball valve with actuator is available.

CONTACT US!

UMMAN A.Ş.  
Adres: İvrek C.5, B.1341, Çekirge  
No:71, Yomrtaşlı / ANKARA

Phone: +90 312 394 19 90  
Fax: +90 312 394 19 94

E-mail: info@umman.com.tr  
Web: www.umman.com.tr



## OUR AGGREGATE BIN QUALITY



\*Aggregate bin covers are available..



\*Aggregate pouring chute is available..



\*Aggregate weighing bin is available.



\*Pneumatic controlled piston available.



\*Vibromotor is available.



\*Valve is available.



\*Loadcell is available.



\*Vibromotor mevcuttur.



\*Pneumatic controlled piston available.

## MIXER POURING CHUTE



\*Since the mixer pouring chute is bolted, it provides ease of maintenance.



\*0.75 kW single stage additive pump is available.



\*3" valve with butterfly actuator is available.



\*Valve is available.



\*Dalgakiran compressor is available.

## OUR PLANT EQUIPMENT

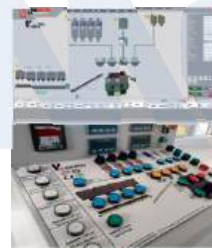
### CABIN AND AUTOMATION



\*Dimension (mm): 1900x2300x2400  
\*PVC System (Insulating Glass) Insulation, Walls polystyrene foam, ceiling glass wool

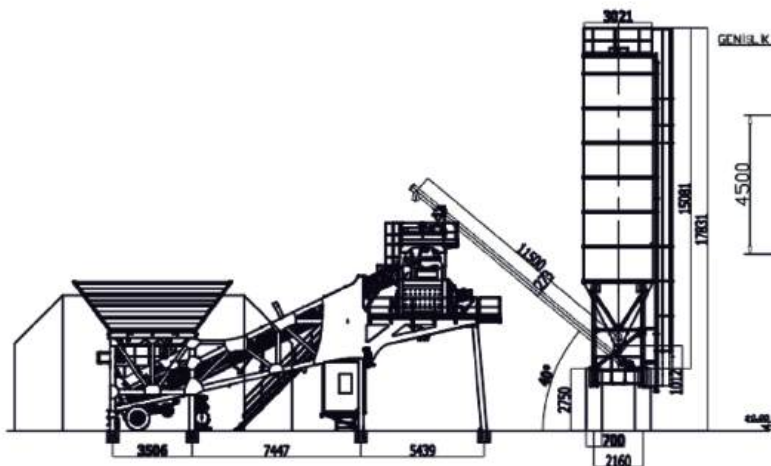


\*Siemens/ABB Switching material  
\*Omron/PLC  
\*Laptop  
\*Manual Control (Mimic)  
\*Air conditioner: Available (9000 btu)

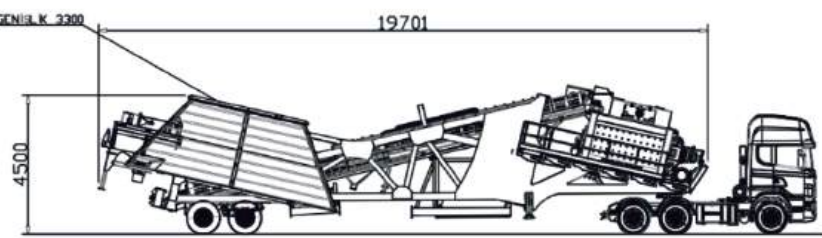


\*Fully automatic operating system  
\*Weighing indicator very useful and easy interface  
\*Software (Cabiness)  
\*Preparation and printing of requested reports

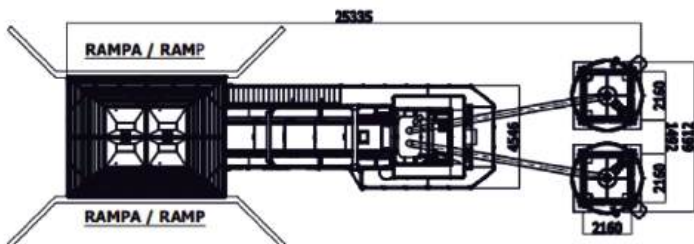
## SETTLEMENT PLAN



## TRANSPORT PLAN



WEIGHT: 37 TONS



## CONTACT US!

UMMAN A.Ş.  
Adres: İvrek O.Ş.B 1341.Cad.  
No:71 Yomraktepe / ANKARA

Phone: +90 312 394 19 90  
Fax: +90 312 394 19 94

E-mail: info@umman.com.tr  
Web: www.umman.com.tr



